

Wall



Floor
FloorPlus



Loft



Studio



panDOMO®



PAN[greek:...pās;pān: all.., whole..,complete.., total .., encompassing]

DOMO [latin: domus, domu: house, building, household]



panDOMO作为德国ARDEX旗下的品牌，开启了空间设计创意想象的可能性。无论是地面、墙面、天花板，许多的创意和想象都可以通过panDOMO系列产品来满足你的设计需求，实现天马行空的想象力。让panDOMO来帮您实现全新的创意发挥是我们最大的宗旨，不论它是古典的还是现代的，完全依据您的想法来定义。

panDOMO Floor提供装饰美感和耐久性的地坪表面。panDOMO Wall被赋予的个性，使得室内空间散发出和谐开放的现代感。panDOMO无缝缝表面和特殊纹路赢得了许多的奖赏和夸赞，这是panDOMO致力发展的成果。

panDOMO by ARDEX is a modern system for surface design that keeps all architectural possibilities open. No matter whether it's the floor, wall or ceiling, what counts is your ideas. All panDOMO product systems offer you all the design possibilities you could need: be it classical, contemporary or individualized in accordance with your own ideas.

panDOMO Floor offers your floor surfaces that are decorative yet durable. panDOMO Wall is the result of panDOMO's dedicated development of the award-winning system of individualized, seamless surface design, creating rooms that radiate openness, harmony and modernity.

Wall



“水泥基材质的平滑无缝表面，完美满足现代工业外观的预期效果。”

Thomas Pink, 建筑师

“The smooth and seamless surface design was created with a cement-based material and perfectly meets the desired effect of a modern industrial look with a sculptural elegance.”

Thomas Pink, Architect

Floor FloorPlus



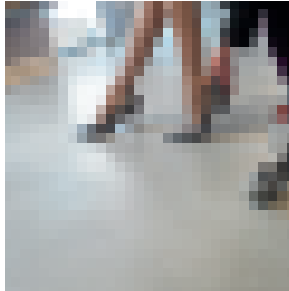
“实现连续性表面，完美发挥房间自身的独特之处。”

Amandus Sattler, 建筑师

“Treating all surfaces equally creates a continuum that focuses, yet liberates the room.”

Amandus Sattler, Architect

Loft



“panDOMO Loft开启了全新且超越预期的独特地面设计的新纪元。”

Antje Riedl, 建筑师

“panDOMO Loft opens up new and unexpected opportunities for unique, floor designs.”

Antje Riedl, Architect



Wall [engl.] Muro, Parete

pan**DOMO**[®]

Wall



panDOMO[®]

Wall

墙面的大革新！

将室内表面创造出一个印象深刻的空间！通过色彩和纹理就能实现你的世界，panDOMO Wall墙面只需几个简单的步骤就能拥有具有设计感的墙面。无论您想要光滑匀质的效果还是双色效果设计，panDOMO Wall墙面都能体现出现代设计的独特趋势。具有吸引力的影调，配以灯光设计，进一步增强室内设计感。

A revolution for walls!

Use the surfaces of a room as a creative space to make an impression. With colors and structure, worlds can be created. panDOMO Wall is fast and easy to use, with only a few simple steps to follow to design a surface. Whether you require a smooth, homogeneous surface or, for example, a two-colored design, panDOMO Wall can set distinctive trends in contemporary interior design. The design of a room is further enhanced through the attractive, iridescent surface appearance, which changes dependent on the light.



建筑：德国蒂森克虏伯建筑
Q2-安静之屋

Object: ThyssenKrupp
Quarters Essen Building
Q2- Room of Silence



“panDOMO Wall带给你更多的创意选择。你可以将panDOMO色浆融合到基础材料中，通过纹理处理，实现不同颜色的无缝拼接。甚至可以结合其他材料。”

“When you choose panDOMO Wall, you get a wealth of options. You can blend panDOMO colour concentrates into the basic material. Add texture. Create patterns of different colours that adjoin seamlessly. You can even integrate elements made of other materials.”

材料

panDOMO W 1是panDOMO Wall墙面中具有个性化表面设计的核心。

高尚的外观

panDOMO Wall把墙面变成了优质设计元素，它赋予了每个墙面独特的设计风格，同时具有功能性。通过Stone Oil的处理，墙体表面具有耐久性，透汽性，且方便清洁。尘埃可轻易被擦除，呈现完美的墙体本色。

颜色，结构，变化

panDOMO Wall有着多样化的风格，可满足设计师发挥其想象力及创造力。创造无限可能：无尽的色彩，设计，无缝拼接图案，无限的可能性。墙面好像一个不可思议的调色盘，赋予每位想要创新的人们无限的灵感。

The material.

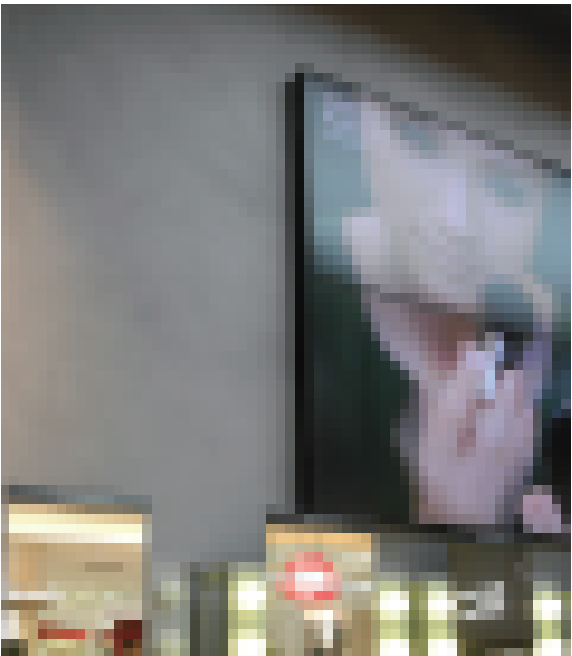
The centerpiece of individual surface design with panDOMO Wall is panDOMO W 1.

Noble surfaces.

panDOMO Wall turns walls into high-quality design elements. They can be designed individually to give every room a special feel. panDOMO Wall is also very functional. When treated with stone oil, the surface is durable, vapour permeable and easy to clean. Impurities can simply be wiped off leaving only pure elegance.

Color, structure and move.

panDOMO Wall is ideal for creating individual worlds and can be used to invent many different styles. There is no limit to creativity: an infinite number of colors, designs, and patterns come together seamlessly; in short, everything is possible. A breathtaking palette and source of inspiration for anyone who wants to turn simple rooms into new, unique worlds of inspiration.



建筑：
Make Up For Ever

Object:
Make Up For Ever

panDOMO Wall,
均匀的
柔软似云朵般的外观：
简单且朴素。

panDOMO Wall,
homogenous
Soft, cloud-like look:
simple and at the same time plain.

panDOMO Wall,
平滑的
冷色调
现代感。

panDOMO Wall,
smooth
The modern accents
are further emphasized by the cool look.

panDOMO Wall,
纹路感的
每一墙面都是唯一的，
这种材料带来无限的可能性。

panDOMO Wall,
textured
Just as every wall is unique,
this material offers an infinite variety of possibilities.

外观的力量

panDOMO Wall赋予了墙面全新的面貌，可以运用于任一风格，任意环境下。在灰色与白色的保留色调中，它强调了近似工业创意空间的风格。通过纹理和大地色调让房间洋溢着温暖的地中海气氛。低调、浓烈抑或造型无限的可能性。

The power of the surface.

Walls created with panDOMO Wall form the face of a room. panDOMO Wall can be used to suit any style and ambiance. In reserved tones of grey and white it emphasizes a cool, almost industrial character. With texture and earthy tones, rooms gain a warm, Mediterranean atmosphere. Reserved, accentuated or formative the possibilities are endless.

私人住宅
Private object

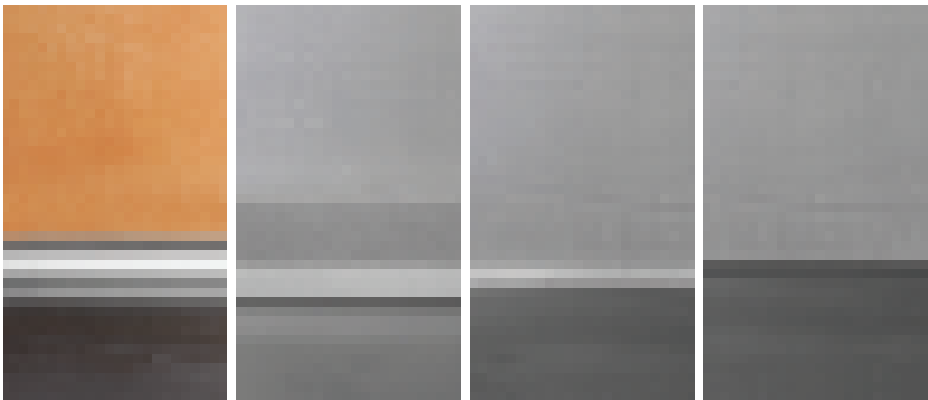


精美的饰面

panDOMO Wall为墙地间的变换提供了无限的可能。根据环境以及使用情况，我们推荐由不锈钢、拉丝铝和木材或塑料制造的接缝条。墙地间的接缝也可以用硅胶填充，亦可实现无填充间隙效果。

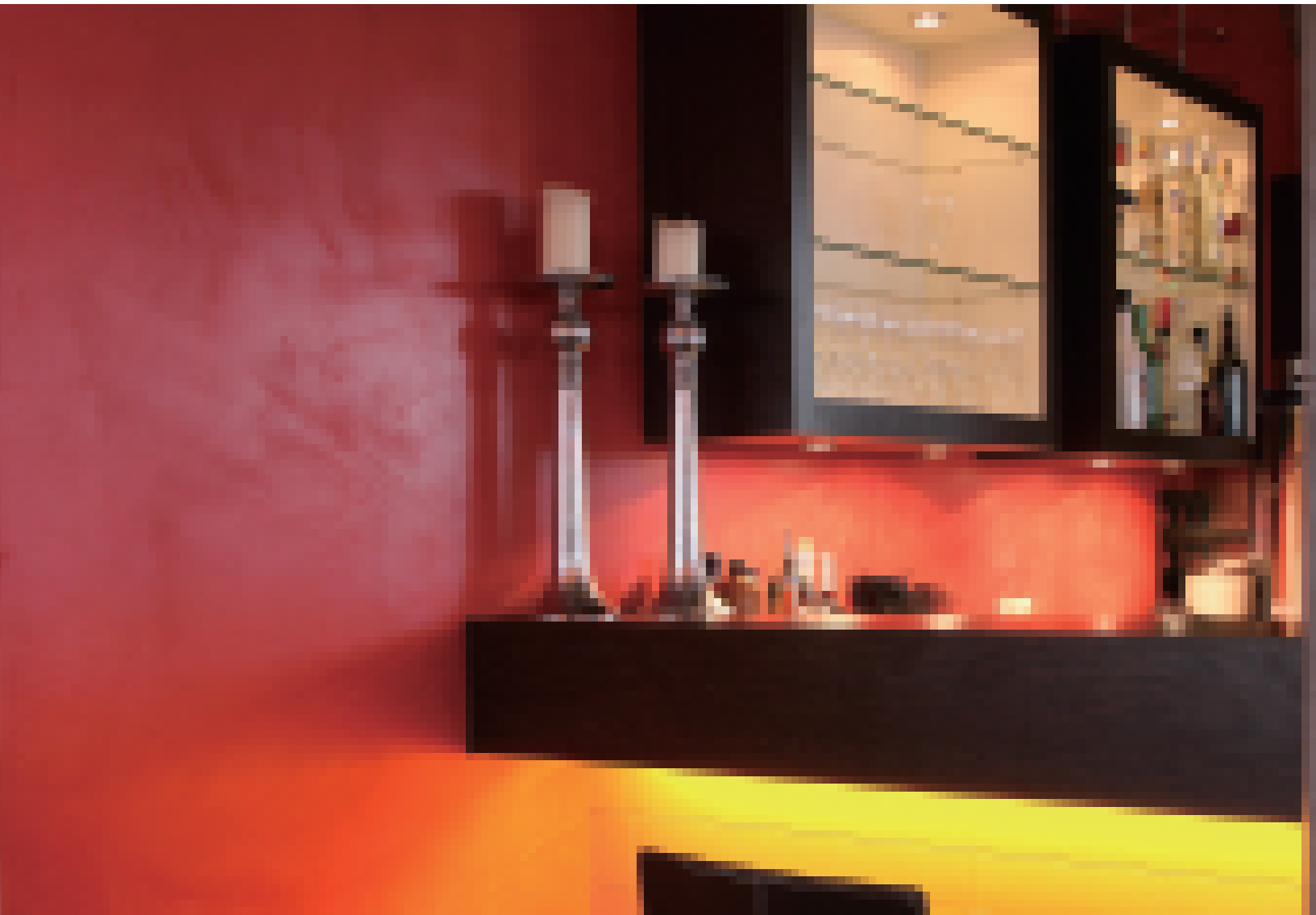
Beautiful finish.

panDOMO Wall offers countless possibilities for transitions between wall and floor. Depending on the desired ambiance and use, profiles made of stainless steel, brushed aluminum and wood or plastic are recommended. Gaps between floor and wall can also be sealed with silicone. Even shadow gaps can be easily formed.



建筑：
个性餐厅

Object:
Individual Restaurant





私人住宅
Private object

外观的力量

panDOMO Wall迷人的效果运用于任何环境。正因为水泥给了我们如此的宣言，极其粗矿和坚硬的效果超越了现有任何的装饰系统，经过panDOMO Stone Oil处理 的表面毫无油腻感，且透汽，耐污。
尘埃，污垢极易清理，尽量高雅本质。

Elegant and practical.

panDOMO Wall captivates with its suitability for any environment. Thanks to its cementitious origins, the surface is extremely robust and far tougher than any existing decorative system. Surfaces which are treated with panDOMO stone oil are non-greasy, vapour-permeable, and resistant to dirt. Typically encountered dust and grime can simply be wiped off, leaving behind pure elegance.





FLOOR [engl.] Boden, Etage, Stockwerk

PLUS [lat.] mehr, viel

PLUS [lat.] more, comp. to multus much



pandOMO®

FloorPlus

panDOMO[®]

Floor
FloorPlus

创意地面，没有极限。

panDOMO Floor和panDOMO FloorPlus，让创意无极限。你可以将自己心仪的任何画面组合在一起，并完整地保留设计师的愿景。panDOMO Floor具有高强度和出色的稳定性。

The sky is the limit for your floors.

With panDOMO Floor and panDOMO FloorPlus, creativity knows no bounds. You can compose any look your heart desires – and perfectly preserve the integrity of your designer's vision. panDOMO floors enable architecture that radiates fascinating intensity and compelling consistency.

建筑：柏林Cosmo酒店

Object: Hotel Cosmo, Berlin





私人住宅
Private object

整体无缝式地面

地面对室内空间的影响力来源于其外观和功能性。具有工业化外观的表面，且整体无缝，极其简约。

耐久

panDOMO Floor具有足够的坚固程度，便于使用者的维护与清理。即使厚度只有5mm，它也具有不收缩、不龟裂、耐久等特性，可与实木地板或天然软岩相媲美。panDOMO Floor也可用于地暖系统上，且即使面对椅子滚轮的碾压，也毫无惧色。

panDOMO Floor，设计者的地面，由panDOMO K1组成的自流平地面系统。经过stone oil处理的地面，如丝缎般光泽且耐磨、防水，提升色彩的质感。

Monolithic floors.

Floors develop their influence on a room by providing shape and function. Surfaces are created that appear industrial and monolithic at the same time. Simply pure floor.

Durable.

panODMO Floor also achieves maximum durability with minimal effort. Even at a thickness of 5 millimeters it is permanently resilient like high-quality parquet or soft natural stone. The floor surfaces made with panDOMO Floor are suitable for underfloor heating and chair wheels and are resistant to fading. The basis for panDOMO Floor is the designer levelling compound panDOMO K 1. If the floor is treated with stone oil afterwards, the surface has a silky sheen that increases color intensity, abrasion and water resistance.

百变的风格

地坪不仅仅是地坪！

通过颜色、阴影、填料及光效等不同的元素，赋予每个房间新的风格与灵魂。无论是木质家具的温馨，还是手工制造的陶瓷砖般的乡村风格，panDOMO Floor都可以根据您的不同要求完美地搭配多种风格。

PANDOMO Floor has many faces.

panDOMO Floor is not just a floor!

Through the individual employment of the color hues, shades, aggregate, iridescent effects and techniques every floor comes to life and starts to mould the room. With PANDOMO Floor, floors can be matched individually to the particular requirement. They can exude warmth like parquet, or appear rustic like hand-made terracotta tiles.

建筑：Dior专卖店

Object: Dior Store





私人住宅
Private object

极简的典雅品味

满足最高时尚潮流的要求，独特风格经久不衰。
完美无缝的水泥基材质，不仅为商业空间场合，
还为私人居家空间提供了更佳质感的保证。
整体无缝外观展现出广阔的形象。混凝土的质感，
工业化的外观不仅提升商业空间整体效果，也提升
了私人居家环境。

Down-to-earth elegance.

panDOMO Floor fulfils the highest requirement of
style, exclusiveness and long-term durability. The
seamless and joint-free floors give a spacious impres-
sion. The concrete feel and industrial appearance not
only ensure a quality appearance in commercial
areas, but also increasingly in residential environ-
ment.

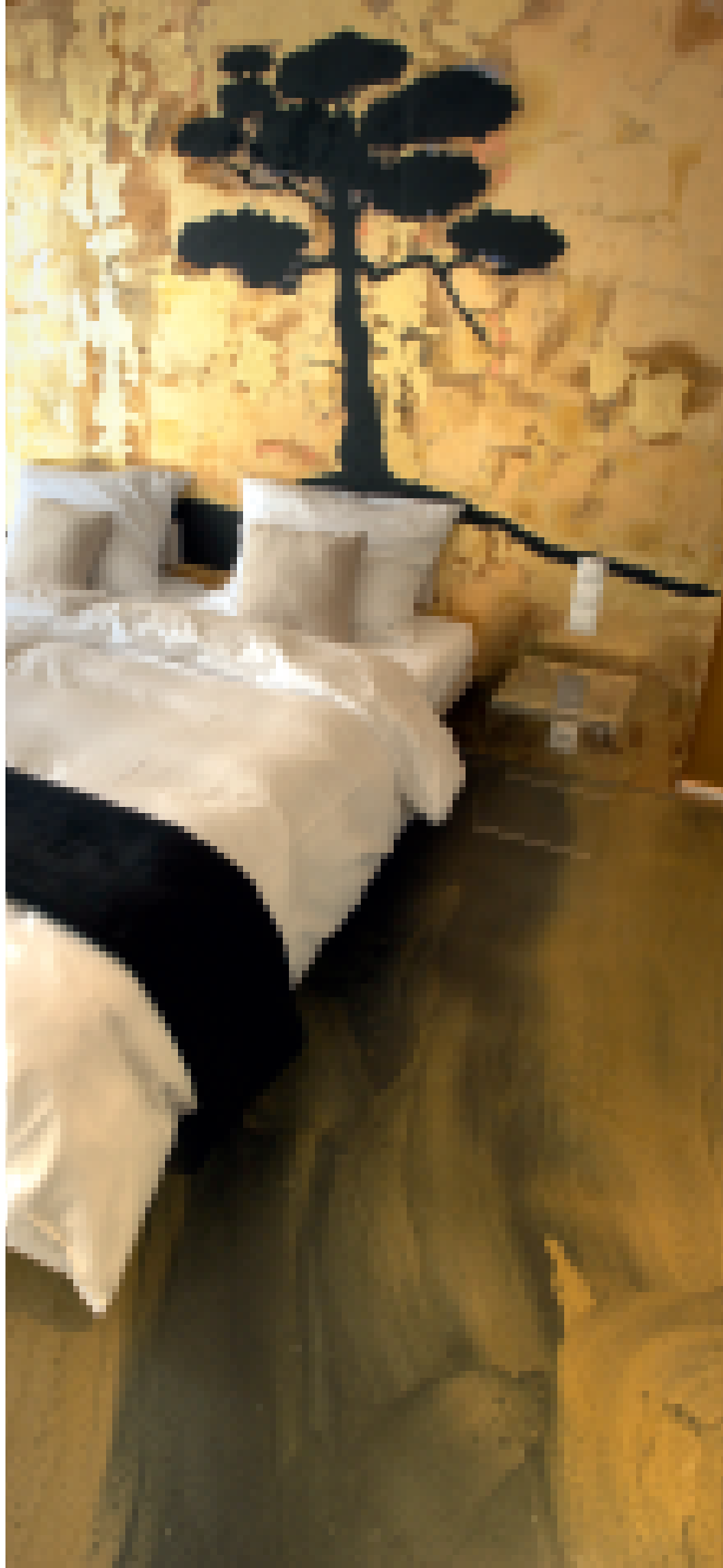


无限的色彩选择

在现有的空间内，panDOMO Floor也能提供无限色彩的搭配。无论现代、复古、酷雅，结合活力的色彩或时尚高冷风格，panDOMO地面为小空间的色彩设计提供无尽的可能。无论是均匀的单色设计或丰富多彩的创意图形，panDOMO无缝随意组合让所有设计就像单块画布所表现出的效果一样。

Unlimited choice of colors.

panDOMO Floor offers endless possibilities for designing rooms with color. Hardly any other floor can be integrated into an existing interior or ambiance as elegantly or precisely. Whether modern, rustic, or cool elegance, with lively color or stylishly reserved, panDOMO Floor offers countless possibilities for an excellent color design even for small areas. Even multi-colored floor designs are not inferior to the single-colored floor surfaces with respect to elegance or brightness. And because all color surfaces join together seamlessly, the floor looks like it has been created in a single section.



panDOMO FloorPlus: 超越预期的高品质！

对于有独特理念的人来说，panDOMO FloorPlus将是完美的选择。panDOMO FloorPlus是一种独特的水泥基地面，具有高耐磨，强度高的特性。它的优势是建立在panDOMO Floor之上，通过特殊的手工镟刀处理技术实现完美的效果。在地面上湿对湿喷洒独特的高质量聚合物，表面会变得更加坚硬，呈现出与panDOMO Floor相同质感的效果。简单的抛砂过程也能在大面积区域内快速有效地完成。在人流量较大的环境中，如酒店大堂或商店等对改造速度要求高的区域，“Plus”的价值能够得到充分地体现。

panDOMO FloorPlus: Top quality with something extra!

panDOMO FloorPlus is the perfect choice for all those who value something special – an individual cementitious floor with a hard wearing, tough surface this is where the established advantages of panDOMO Floor receive their “finishing touch” with help from a special broadcasting technique. By sprinkling high-quality, specially selected aggregate into the freshly laid floor, the surface becomes much harder and is given a more homogenous décor compared to the panDOMO Floor. The simple sanding process also allows large areas to be completed quickly and economically. The “Plus” soon pays for itself in highly-trafficked environments such as hotel lobbies or shops, where renovation must be carried out as quickly as possible.

建筑：
YSL专卖店

Object:
YSL Store





LOFT [engl.] Studio, gewerblicher Charakter, minimalistisch



panDOMO®

Loft

panDOMO[®]

Loft

个性地面

panDOMO Loft 是 panDOMO Floor 的进一步研发成果，它得益于自身的稳定性和较大的承载负荷能力，尤其是在公共商业区域。

由于其独特的质感和稳定性，而且应用范围广，panDOMO Loft 也可用于私人住宅。

在这里，panDOMO 装饰性填料创新充分证明了它的卓越品质：矿物质面层可以大规模施工薄层 panDOMO Loft（约 2mm），这也意味着不必再忧虑固定设施和门的高度调节。换句话说：panDOMO Loft 不仅美观，而且省时。

Flooring with character.

panDOMO Loft is a further development of the well-established panDOMO Floor and was created as a result of its solid and extremely durable structure for floors bearing large loads, especially in public commercial areas.

But panDOMO Loft has also proved itself in private use as its unique texture and consistency allows for an almost infinite range of applications.

It is here that the newest innovation in panDOMO decorative fillers is able to prove its exceptional quality: e.g. the large-scale application of a mineral top layer can be applied thinly (approx. 2mm) with panDOMO Loft, meaning that the height adjustment of fixtures and doors becomes superfluous. In other words: panDOMO Loft is not only beneficial visually, but also saves time in a distinctive manner.

建筑：
ACR Planungsburo
巴特洪堡

Object:
ACR Planungsburo,
Bad Homburg





建筑：
Galosche鞋店
克隆贝格

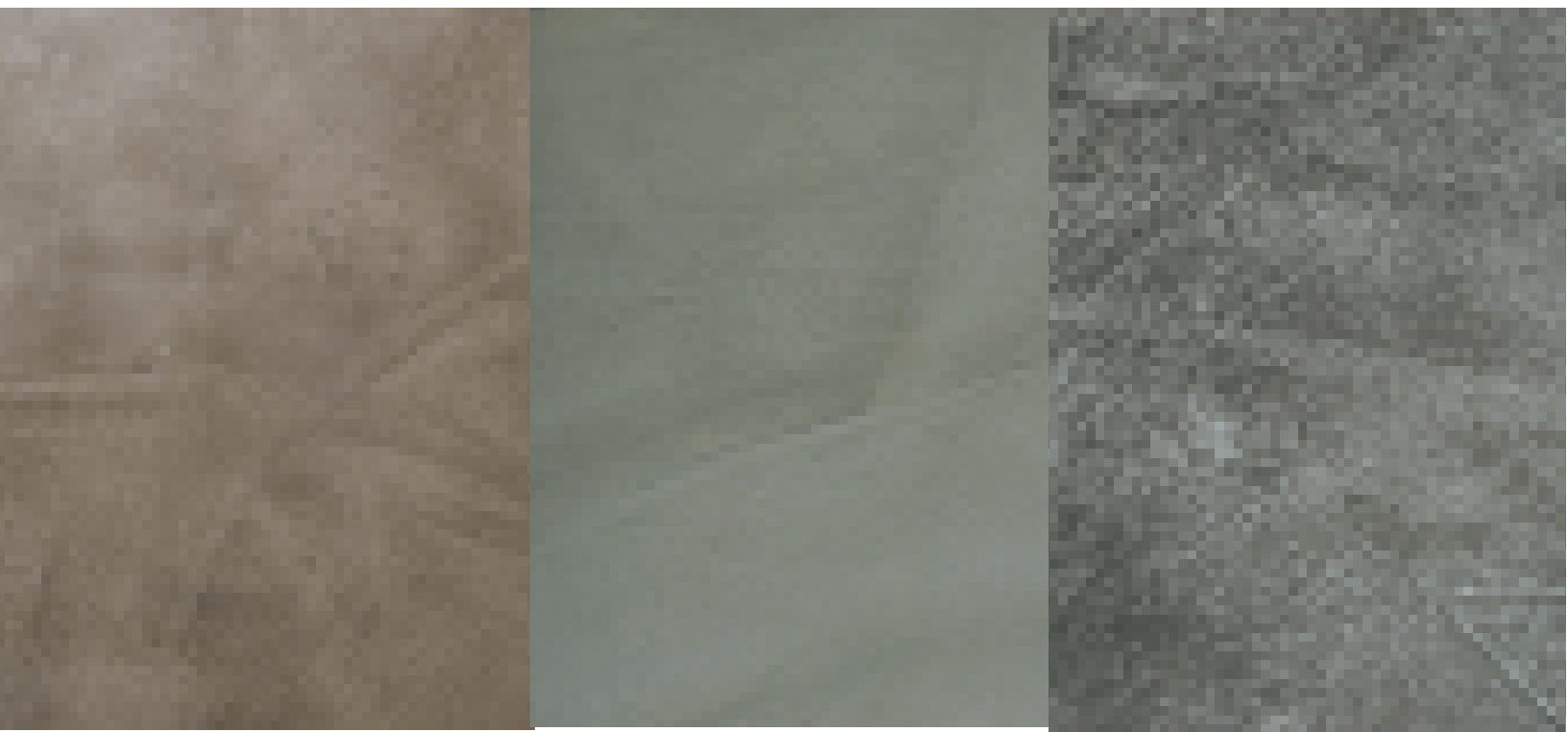
Object:
Galosche shoe shop,
Kronberg

高压下的魅力

在客流量很大的商业区域，如何选择合适的地面俨然是一个热门话题。稳定且优异的材料是一个先决条件。panDOMO Loft 不仅能保持持久不变形，而且让每个空间都拥有独特的风格。

Attractive under pressure.

Choosing the right flooring is a hot topic in commercial areas which are often heavily traffic. A tough consistency and strong material is a prerequisite. panDOMO Loft not only withstands permanent strain, but also makes each room special, with its unique characteristics.



每个细节的体现——外在美

任何一个经营酒店的人都知道建筑造型美观的重要性，特别是所选择的材料和合适的配色方案。除了室内设计 and 产品范围以外，均匀和出色的地面能充分体现其整体形象。这也是 panDOMO Loft如何在实现其自身特色的同时，还提供了一个现代的和耐磨的石材、瓷砖和地板的替代方案。

Representative in every aspect – all a question of appearance.

Anyone who runs a hotel knows how important an attractive appearance, specially-chosen materials and a harmonious color scheme are for the business. Alongside the interior design and product range, a homogenous and outstanding flooring completes the overall image. This is how panODMO Loft gives the overall image its own character whilst creating a modern and hard-wearing alternative to stone, tiles and parquet.

建筑：
BOFFI 展厅

Object:
BOFFI Showroom



适用于不同场所的地面 – 耐冲击

选择panDOMO Loft 实属上乘之选——无论用于公共场所或是私人空间。由于其超强的坚固外表，panDOMO Loft 不仅可靠，令人印象深刻，而且深受每个生活场所或工作场所的青睐，不会太突兀，也不会受其他元素的干扰。

A floor for all occasions – reliable against steps and kicks.

Anyone choosing panDOMO Loft is definitely making the right decision – whether for public or private use. As it is so hardwearing, panDOMO Loft is not only reliable and impressive, but also blends into almost every living or working area without being too dominant or interfering with other elements.

建筑：
Multiline Exclusives
巴特洪堡

Object:
Multiline Exclusives
Licht, Bad Homburg





建筑：10/10 APOTHECARY

Object: 10/10 APOTHECARY

建筑：上海嘉里中心
Object: DKNY, Shanghai







私人住宅

Private object



私人住宅
Private object

panDOMO[®]

FloorBasic

惊人的，独特的，永恒的地面

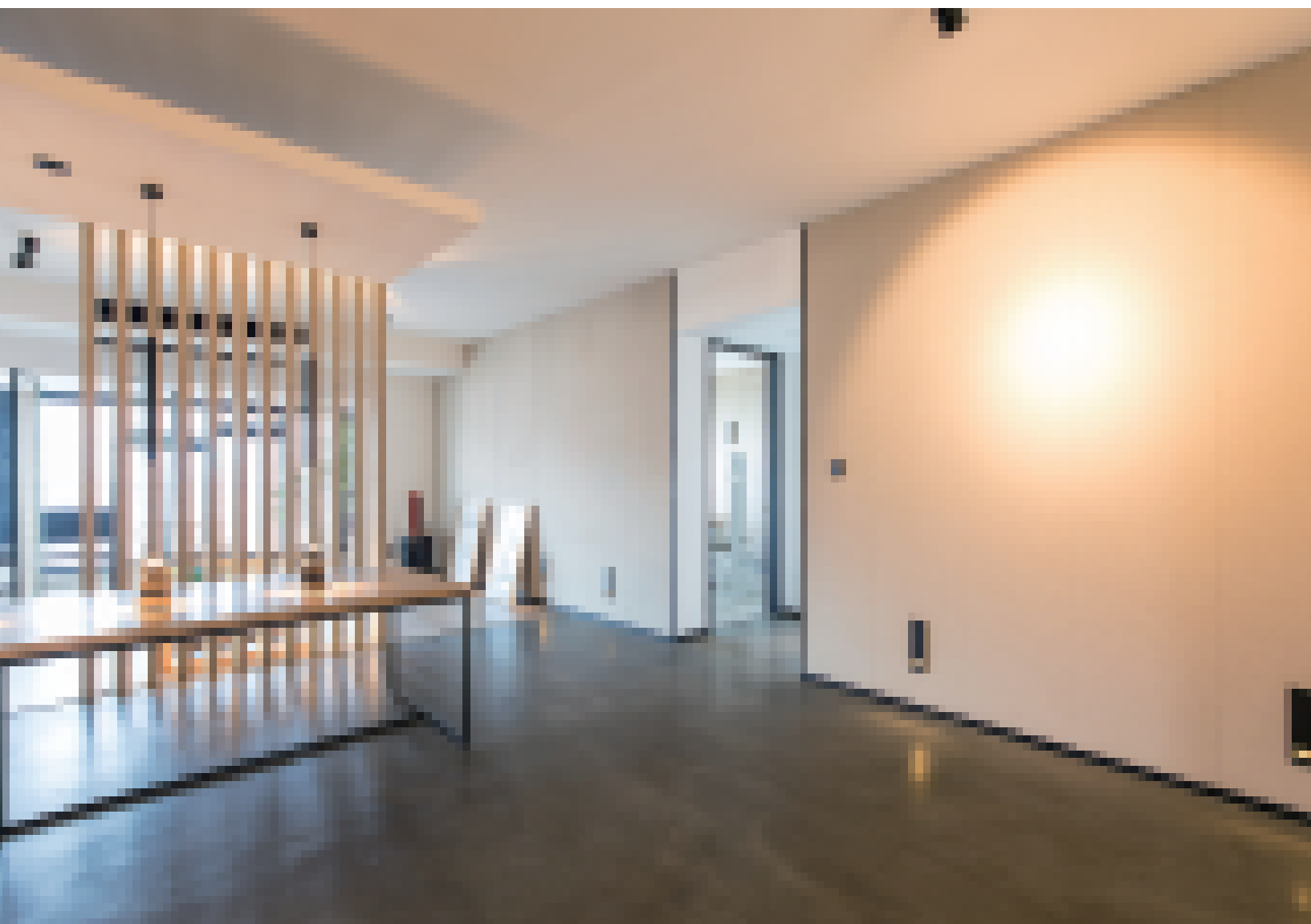
panDOMO FloorBasic——完美的室内设计。就如我们通过每天的生活来表达自己，panDOMO FloorBasic是以房间的设计来体现它的特色。panDOMO FloorBasic不仅便于我们的日常活动，而且它带给我们独特性。独特就是个性。

The floor as a business card – striking, individual, timeless.

panDOMO FloorBasic – room design perfected. Just as we use every day to express ourselves, panDOMO FloorBasic defines the language and characteristics of a room. panDOMO FloorBasic supports our day-to-day activities and all criteria which define us as individuals. As unique as a signature.

建筑：西安私人会所

Object: Xi'an Showroom





Studio [engl.] Atelier eines Künstlers



panDOMO®

Studio



室内装饰的革新

超越限制，让房间成为想象的舞台。通过颜色与设计将建筑表面变成画布。整体统一，对比鲜明，简约优雅、俏皮精致等多种表现融合于一个产品中。将地面，墙壁和天花融为一体，以无可挑剔的诚意和美展现于众。这就是panDOMO Studio.

panDOMO Studio经由巧妙的颜色搭配、一体化的无缝衔接，令空间焕发出无限可能性。绵延流畅的视觉震撼效果，可以实现任何天马行空的想象。蕴含对美好生活期待的美学质感，融入到饱含个性的空间中，完美呈现出优雅灵动的时尚气质。

A revolution for interior decoration

Go beyond the limitations and let rooms become the stage for your imagination. Let Colour and design turn the surface into a canvas. Monolithic unity, striking contrasts, minimalistic elegance or playful details, all encompassed in one product. Floor, wall and ceiling merge into one and embrace the viewer with perfect honesty and beauty. That's Pandomo Studio.

PanDOMO Studio provides the space with infinite possibilities by skillfully colour matching and integrated seamless connection. The continuous and smooth visual shock effect can realize any imagination. Containing the aesthetic texture of anticipation for a better life, it is integrated into a space full of individuality, perfectly presenting an elegant and flexible fashion.

优雅实用的表面

个性化应用赋予每个空间灵动感。
panDOMO Studio具有很强的功能性，经过panDOMO Impregnation处理之后，产品表面具有高耐磨及憎水效果。日常的灰尘和污垢都很容易被擦除，完美呈现出其自身的优雅气质。

Elegant &Functional Surfaces

They can be designed individually to give every room a special feel. PANDOMO Studio is also very functional. When treated with PANDOMO Impregnation, the surface is highly abrasion resistant and water-repellent.. Impurities can simply be wiped off leaving only pure elegance.



panDOMO W 1

测试	测试标准	所需时间	结果
厚度	—	—	1–20 mm
二次施工 (+20°C)	—	—	1小时后
抗压强度	—	1天后	约 4,5 N/mm ²
		7天后	约 8,0 N/mm ²
		28天后	约 13,0 N/mm ²
抗折强度	—	1天后	约 1,5 N/mm ²
		7天后	约 3,0 N/mm ²
		28天后	约 5,0 N/mm ²
蒸汽扩散 系数 μ	DIN 53122 (total system)		约210

panDOMO W 1 Decorative finishing render

	Test standard	Time elapsed	Result
	—	—	1-20 mm
Reworking (+20 °C)	—	—	after 1 hour
Compressive strength	—	after 1 day	appr. 4,5 N/mm ²
		after 7 days	appr. 8,0 N/mm ²
		after 28 days	appr. 13,0 N/mm ²
Tensile bending strength	—	after 1 day	appr. 1,5 N/mm ²
		after 7 days	appr. 3,0 N/mm ²
		after 28 days	appr. 5,0 N/mm ²
Steam diffusion coefficient μ	DIN 53122 (total system)		appr. 210

panDOMO K 1

测试	测试标准	所需时间	结果
厚度	—	—	5–10 mm
开放步行时间 (+20°C)	—	—	1小时后
抗压强度	EN 196, Part 1	1天后	约 13,0 N/mm ²
		7天后	约 20,0 N/mm ²
		28天后	约 30,0 N/mm ²
抗折强度	EN 196, Part 1	1天后	约 3,0 N/mm ²
		7天后	约 5,0 N/mm ²
		28天后	约 8,5 N/mm ²
球硬度	DIN 1168, Part 2	1天后	约 45,0 N/mm ²
		7天后	约 65,0 N/mm ²
		28天后	约 80,0 N/mm ²
防火等级	DIN EN 13501–1		fire classification A2 _{fl} –s1
防滚轮			是
适用于地暖			是: 热水地暖系统
防滑系数	DIN 51131		R 10

panDOMO K 1 Design levelling compound

Test	Test standard	Time elapsed	Result
Layer thickness	—	—	5-10 mm
Walkability (+20 °C)	—	—	after 1 hour
Compressive strength	EN 196, Part 1	after 1 day	appr. 13,0 N/mm ²
		after 7 days	appr. 20,0 N/mm ²
		after 28 days	appr. 30,0 N/mm ²
Tensile bending strength	EN 196, Part 1	after 1 day	appr. 3,0 N/mm ²
		after 7 days	appr. 5,0 N/mm ²
		after 28 days	appr. 8,5 N/mm ²
Ball impression hardness	DIN 1168, Part 2	after 1 day	appr. 45,0 N/mm ²
		after 7 days	appr. 65,0 N/mm ²
		after 28 days	appr. 80,0 N/mm ²
Fire behaviour	DIN EN 13501-1		fire classification A2 _{fl} s1
Resistance to chair castors			Yes
Suitable with floor heating			Yes: hot water floor heating systems
Non-slip capacity	DIN 51131		R 10

panDOMO K 1

测试	测试标准	所需时间	结果
厚度	—	—	5–10 mm
开放步行时间 (+20°C)	—	—	3小时后
抗压强度	EN 196, Part 1	1天后	约 13,0 N/mm ²
		7天后	约 20,0 N/mm ²
		28天后	约 30,0 N/mm ²
抗折强度	EN 196, Part 1	1天后	约 3,0 N/mm ²
		7天后	约 5,0 N/mm ²
		28天后	约 8,5 N/mm ²
球硬度	DIN 1168, Part 2	1天后	约 45,0 N/mm ²
		7天后	约 65,0 N/mm ²
		28天后	约 80,0 N/mm ²
防火等级	DIN EN 13501–1	fire classification A2 _{fl} –s1	
防滚轮	是		
适用于地暖	是: 热水地暖系统		
防滑系数	DIN 51131	R 11	

panDOMO K 1 Design levelling compound

Test	Test standard	Time elapsed	Result
Layer thickness	—	—	5-10 mm
Walkability (+20 °C)	—	—	after 3 hours
Compressive strength	EN 196, Part 1	after 1 day	appr. 13,0 N/mm ²
		after 7 days	appr. 20,0 N/mm ²
		after 28 days	appr. 30,0 N/mm ²
Tensile bending strength	EN 196, Part 1	after 1 day	appr. 3,0 N/mm ²
		after 7 days	appr. 5,0 N/mm ²
		after 28 days	appr. 8,5 N/mm ²
Ball impression hardness	DIN 1168, Part 2	after 1 day	appr. 45,0 N/mm ²
		after 7 days	appr. 65,0 N/mm ²
		after 28 days	appr. 80,0 N/mm ²
Fire behaviour	DIN EN 13501-1	fire classification A2 _{fl} -s1	
Resistance to chair castors	Yes		
Suitable with floor heating	Yes: hot water floor heating systems		
Non-slip capacity	DIN 51131	R 11	

panDOMO K 2

测试	测试标准	所需时间	结果
厚度	—	—	2–4mm
开放步行时间 (+20°C)	—	—	约2小时后
抗压强度	EN 196, Part 1	1天后	约 16,0 N/mm ²
		7天后	约 23,0 N/mm ²
		28天后	约 32,0 N/mm ²
抗折强度	EN 196, Part 1	1天后	约 4,0 N/mm ²
		7天后	约 6,0 N/mm ²
		28天后	约 10,0 N/mm ²
球硬度	DIN 1168, Part 2	1天后	约 40,0 N/mm ²
		7天后	约 55,0 N/mm ²
		28天后	约 70,0 N/mm ²
防火等级	DIN EN 13501–1	fire classification A2 _{fl} –s1	
防滚轮	是		
适用于地暖	是: 热水地暖系统		
防滑系数	DIN 51131	R 10	

panDOMO K 2 Design thinlayer compound
for floor areas, white

Test	Test standard	Time elapsed	Result
Layer thickness	—	—	2-4mm
Walkability (+20 °C)	—	—	after appr. 2 hours
Compressive strength	EN 196, Part 1	after 1 day	appr. 16,0 N/mm ²
		after 7 days	appr. 23,0 N/mm ²
		after 28 days	appr. 32,0 N/mm ²
Tensile bending strength	EN 196, Part 1	after 1 day	appr. 4,0 N/mm ²
		after 7 days	appr. 6,0 N/mm ²
		after 28 days	appr. 10,0 N/mm ²
Ball impression hardness	DIN 1168, Part 2	after 1 day	appr. 40,0 N/mm ²
		after 7 days	appr. 55,0 N/mm ²
		after 28 days	appr. 70,0 N/mm ²
Fire behaviour	DIN EN 13501-1	fire classification A2 _{fl} -s1	
Resistance to chair castors			Yes
Suitable with floor heating			Yes: hot water floor heating systems
Non-slip capacity	DIN 51131	R 10	

panDOMO K 7 FloorBasic

产品说明

panDOMO K 7灰色系列的快速固化型自流平地面。打造panDOMO FloorBasic施工完后约3至4小时即可行走,24小时后即可使用。

应用范围

室内,干燥坚固的水泥基层;
可作为panDOMO Floor和panDOMO Loft系统施工前的整平, 用于有耐磨要求的办公室、酒店、商场、展厅等场所的地面。

施工厚度

panDOMO K 7单次施工厚度5-10mm。最小施工厚度5mm。

包装

25kg塑料覆膜多层纸袋包装。

储存期

保持未开封和干燥阴凉环境下, 通常可以存储6个月。

技术数据

根据亚地斯质量标准粉末

干粉密度:	约1.3 kg/L
耗用量:	约1.67 kg干粉/mm/ m2
施工温度范围:	10°C – 35°C
湿浆密度:	约2.0kg/L
湿浆pH值:	约12
流动时间 (20°C):	约 15 分钟
可步行时间 (20°C):	约3 – 4 小时
施工厚度(单层):	5 – 10mm
加入骨料后施工厚度:	10 – 20mm

砂浆养护

后续施做浸封剂/封闭涂层的等待时间:

对于大多数原料:	约为24小时
耐椅子滚轮:	是
是否适合地热系统:	是*
是否适合潮湿区域:	否
冻融循环稳定性:	否

*请咨询技术服务部

根据中国标准JC/T985-2005

流动度

初始流动度:	约140mm
20分钟流动度:	约130mm

抗压强度

1天后:	约15 MPa
28天后:	约40 MPa

抗折强度

1天后:	约5 MPa
28天后:	约9 MPa

粘结强度: 约1.8 MPa

尺寸变化率: -0.09%

耐磨性: 0.35g

抗冲击性: 无开裂或脱离底板

DESCRIPTION

panDOMO K 7 is a pre-colored rapid hardening self leveling compound, walkable after approximately 3 – 4 hours and ready for use after 24 hours.

AREAS OF APPLICATION

Dry, internal, cementitious sub-floors;
Filling, smoothing and leveling of concrete slabs and cementitious screeds prior to sealing, covering with panDOMO floor system;
Wearing surfaces in offices, hotels, shops, etc.

APPLICATION THICKNESS

General
panDOMO K 7 can be applied from 5 – 10mm in one application.

PACKAGING

25kg multi-layer paper bags incorporating a poly liner.

STORAGE & SHELF LIFE

panDOMO K 7 has a shelf life of approximately 6 months if stored in dry conditions in the original un-opened packaging.

TECHNICAL DATA

In Accordance with ARDEX Quality Standards

Powder	
Bulk Density of Powder:	approx. 1.3kg/L
Consumption:	approx. 1.67kg powder/mm/ m²
Wet-Fresh-Mixed Mortar	
Application Temperature:	10°C – 35°C
Mixed Mortar Density:	approx. 2.0kg/L
pH of Fresh Mortar:	approx.12
Flow Time (20°C):	approx.15 minutes
Walkability (20°C):	approx.3 – 4 hours
Application Thickness:	5 – 10mm
Thickness with Aggregate:	10 – 20mm

Cured Mortar

Ready for Sealing (23°C / 50%RH):	approx. 24 hours
Resistant to Chair Castors:	Yes
Suitable with Floor Heating:	Yes*
Moisture Tolerant:	No
Freeze-Thaw Stable:	No

*Refer to Ardex Technical Services.

In Accordance with Chinese National Standard:-JC/T985-2005

Flow	
Initial:	approx. 140mm
After 20 minutes:	approx. 130mm
Compressive Strength	
After 1 day:	approx.15Mpa
After 28 days:	approx. 40Mpa
Flexural Strength	
After 1 day:	approx. 5Mpa
After 28 days:	approx. 9Mpa
Adhesion Strength:	approx. 1.8Mpa
Shrinkage:	-0.09%
Abrasion Resistance:	0.35g
Impact Resistance:	No cracks or Delimitation

产品说明

由特种水泥、聚合物、精选骨料、Microtec 纤维及特制添加剂组成的白色粉末, 每包混合约3.9 升水搅拌成易于镬抹的稠浆体, 并有约40 分钟的开放时间, 最终形成薄批层。

应用范围

具有卓越创意感的实用性表面材料, 可用于日常有冲击或震动的场所。如: 店面, 餐厅, 咖啡厅, 大厅, 私人定制空间, 展厅等。

包装

12.5kg塑料覆膜多层纸袋包装。

储存期

保持未开封和干燥阴凉环境下, 通常可以存储6个月。

技术数据

混合比例:	约3.9 L水: 12.5 kg 粉料
干粉密度:	约1.2 kg/L
湿浆密度:	约1.8 kg/L
pH值:	1天后: 约9-10
覆盖率:	约1.5 kg 干粉/m²(3 道)
桶中待料时间 @20 ° C:	约40 分钟
可步行时间 @20 ° C:	约3小时
抗压强度	
1天后:	约16N/mm²
7天后:	约25N/mm²
28天后:	约30N/mm²
抗折强度	
1天后:	约4N/mm²
7天后:	约7N/mm²
28天后:	约10N/mm²
布氏硬度	
1天后:	约50N/mm²
7天后:	约70N/mm²
28天后:	约80N/mm²
椅子脚轮:	适用
地热:	适用
电地热:	不适用

DESCRIPTION

White powder consisting of special cements, plasticising synthetic additive powders, selected fillers, Microtec fibres and special additives.
The contents of the bag are mixed with approx. 3.9 l water to form a smooth paste. The compound is easy to apply with a trowel to form a thin layer and remains workable for approx. 40 minutes.

AREAS OF APPLICATION

To produce impressive, creatively designed visible and usable surfaces that are subject to normal impact and shock, e.g. in salesrooms, restaurants, cafés, prestigious entrance halls, private living areas, exhibition rooms etc.

PACKAGING

12.5kg multi-layer paper bags incorporating a poly liner.

STORAGE & SHELF LIFE

panDOMO Studio has a shelf life of approximately 6 months if stored in dry conditions in the original un-opened packaging.

TECHNICAL DATA

Mixing ratio:	approx. 3.9 l water: 12.5 kg powder
Bulk density:	approx. 1.2 kg/L
Fresh mortar weight:	approx. 1.8 kg/L
pH value:	after 1 day: approx. 9-10
Material required:	approx. 1.5 kg powder per m² (applying 3 layers)
Pot life at +20 °C:	approx. 40 min
Walkability (20°C):	approx.3 hours
Compressive Strength	
After 1 day:	approx.16N/mm²
After 7 days:	approx.25N/mm²
After 28 days:	approx.30N/mm²
Bending Tensile Strength	
After 1 day:	approx. 4N/mm²
After 7 days:	approx.7N/mm²
After 28 days:	approx. 10N/mm²
Brinell Hardness	
After 1 day:	approx. 50N/mm²
After 7 days:	approx.70N/mm²
After 28 days:	approx. 80N/mm²
Suitable for chair castors:	yes
Suitable for floor heating:	yes
Electric underfloor heating:	no



COLOURS [engl.] Fare, Farbgebung



panDOMO®

Colors

panDOMO®

Colours

给你的设计上色，有多种选择

panDOMO提供了一个出色的色彩选择方案。最妙的是，每个色调都可被单独修改。五种配色法——温柔的、天然的、纯净的、明亮的和重色的——给你的室内设计提供完美的出发点。最初是由Johannes Klinger 为panDOMO设计，这五个调色板汇集经典色调和感觉，并为颜色的选择提供一个宝贵的指导。

1. 浅色

柔和的墙面让房间充满清新气息，并影响着人们的情绪。潜在应用：感谢它们的多功能性，这个调色板将现代、高雅的特征应用于公共和私人空间，并适用于各种各样的环境。这些谨慎的颜色适合大范围墙面。风格：现代的。象征意义：活力，实用性。

10/1.1

10/1.3

10/1.5

Colour your design – in infinite ways

panDOMO® offers an excellent selection of colours. Best of all, each shade can be individually modified. The five colour schemes – Gentle, Natural, Pure, Cheery and Accent – offer the perfect starting point for your interior design. Initially created especially for panDOMO® by Johannes Klinger, the five palettes bring together classic shades, earthy notes and trends to provide an invaluable guide to colour selection.

1. Light

Pastel walls bring an air of clarity to a room and have a stimulating effect on our mood. Potential applications: Thanks to its versatility, this palette lends itself to both public and private spaces with a modern, elegant character and is appropriate in a wide range of contexts. These discreet colours are suitable for large wall areas. Style: Contemporary. Associations: Vigour, practicality.

10/1.2

10/1.4

10/1.6

2. 天然的

朴实的自然色调给人带来一种安全氛围。通常这些颜色在室内可以产生柔软和扩散日光的影响。潜在应用：在各种环境中都适合，特别是在私人空间或高档的乡村风格的餐厅。风格：乡村别墅。象征意义：永恒的，宁静的避难所。

10/2.1

10/2.3

10/2.5

2. Natural

The muted colours of the natural shades create a sense of security. In the room these colours often have the effect of diffused, soft daylight. Possible applications: versatile uses, predominantly in private rooms or superior country house-style restaurants. Lifestyle: country house. Associations: timelessness, tranquil security.

10/2.2

10/2.4

10/2.6

3. 纯净的

柔和的灰色色调使我们从大自然中想起我们熟悉的色调。他们传达真实性和偏移的形状、结构以及其他颜色，以达到醒目的效果。潜在应用：当代建筑，阁楼，简约装饰，新现代主义，设计师的生活。风格：阁楼，简约主义。象征意义：减少，优雅内敛。



4. 明亮的

这些颜色都充满了生活的乐趣。潜在应用：浓烈的颜色适合欢快的生活区域，鼓舞人心的工作空间，幼儿园，医院，温泉和单个墙面。风格：地中海。象征意义：随和，友好。



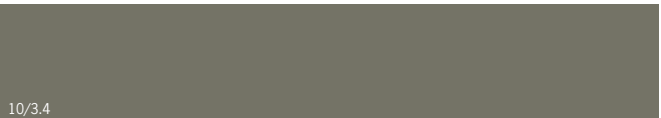
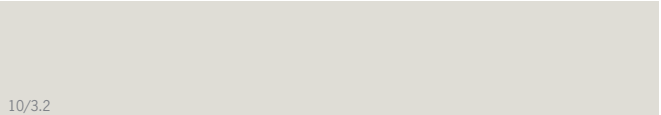
5. 重色的

大胆的色彩激发人类的想象力。饱和色有激励和激发的能力。潜在应用：城市场景，在大空间里增加一个新鲜的、现代的格调。风格：城市。象征意义：自信，注重个人形象，媒体的启发。



3. Pure

Muted grey tones are reminiscent of shades familiar to us from nature. They convey authenticity and offset shapes, structures as well as other colours to eye-catching effect. Potential applications: Contemporary buildings, lofts, minimalist décor, new modernism, designer living. Style: Loft, minimalism. Associations: Pared down, elegantly restrained.



4. Bright

These shades are imbued with joie de vivre. Potential applications: Colour accents for cheerful living areas, inspiring work spaces, nursery schools, hospitals, spas and single walls. Style: Mediterranean. Associations: Sociable, friendly.



5. Accent

Bold hues stir the human imagination. Saturated colours have the power to energise and excite. Potential applications: Accents for urban scenarios, adding a fresh, modern touch in large spaces. Style: Urban. Associations: Confident, image-conscious, media-inspired.

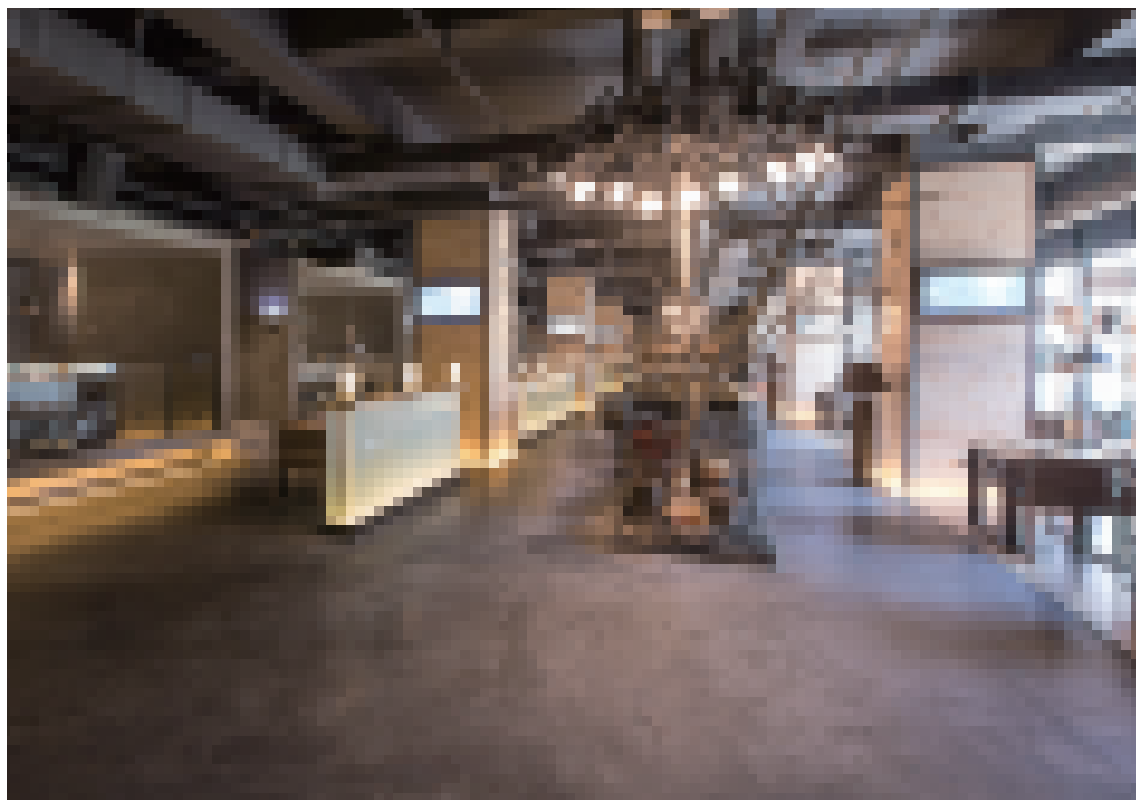


酒店 / 餐厅 Hotel / Restaurant

购物中心 / 展厅 Shopping Center / Showroom

办公建筑 / 博物馆 Office Building / Museum

私人住宅 Private Apartment



建筑：西安东舍酒店

Object: Xi'an East House Boutique Hotel

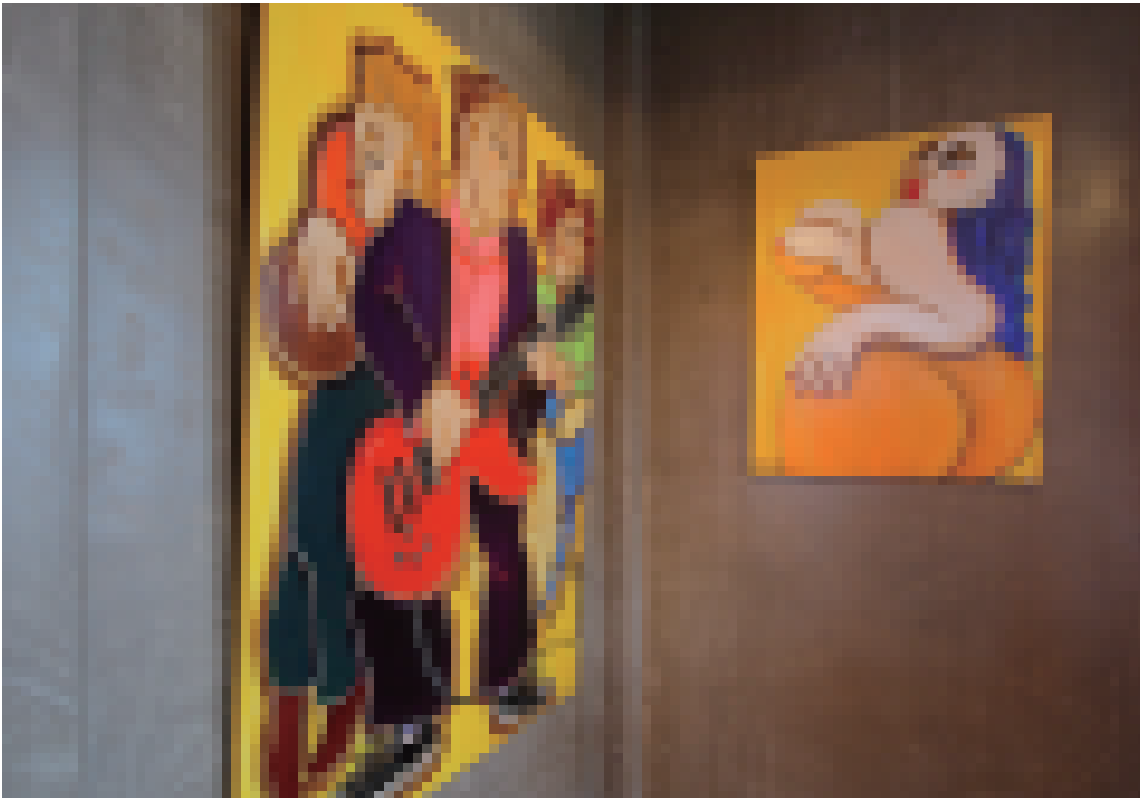


建筑：西安东舍酒店

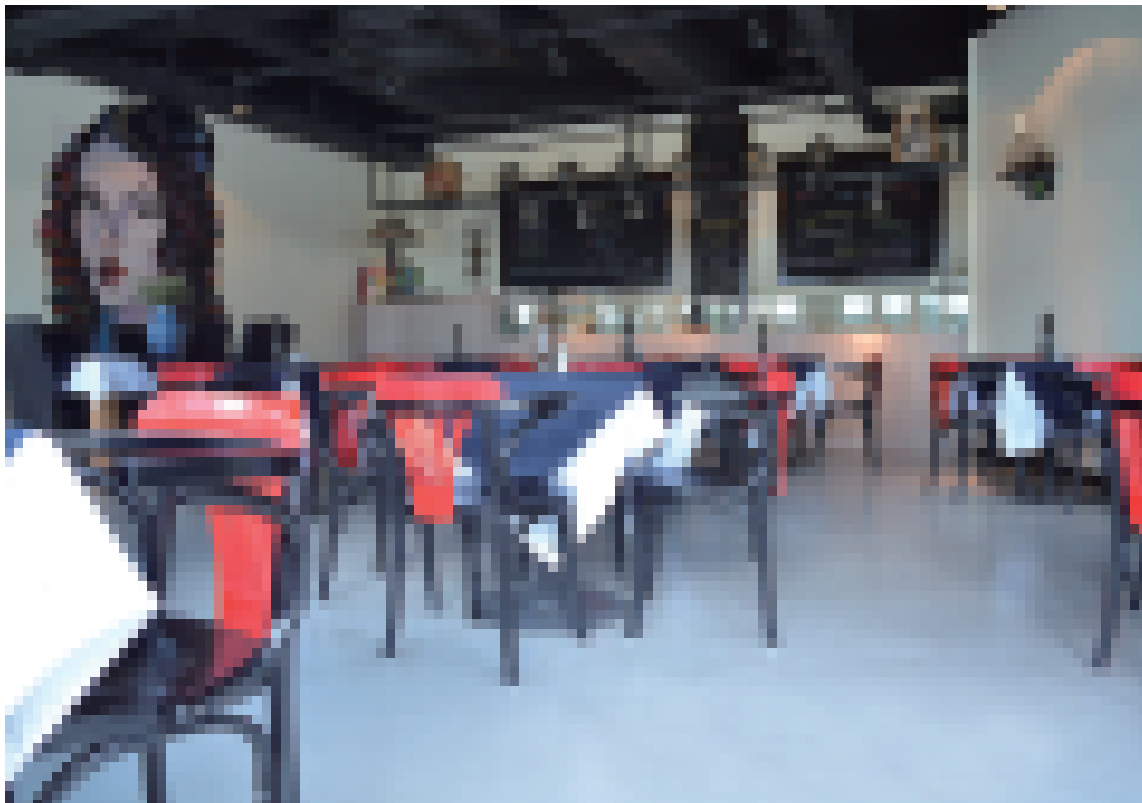
Object: Xi'an East House Boutique Hotel



建筑：特色餐厅 Object: Characteristic Restaurant



建筑：特色餐厅 Object: Characteristic Restaurant



建筑：特色餐厅 Object: Characteristic Restaurant



建筑：特色餐厅 Object: Characteristic Restaurant



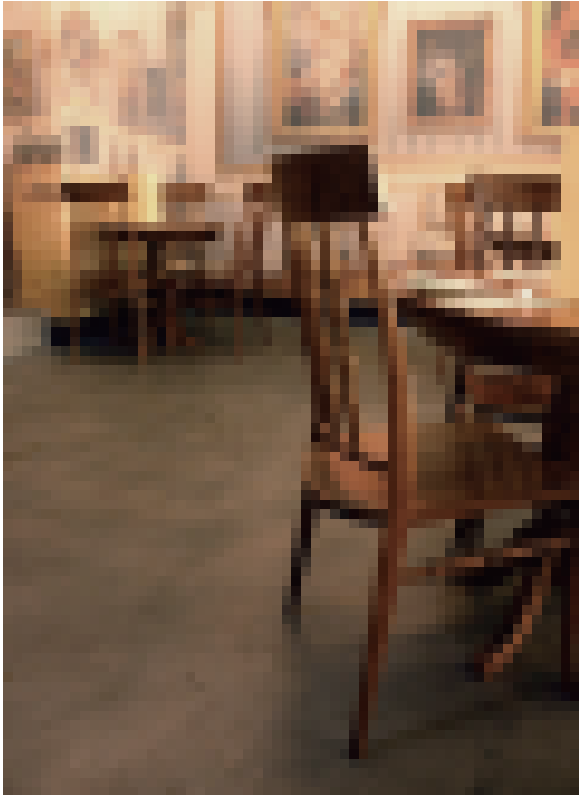
建筑：特色餐厅

Object: Characteristic Restaurant



建筑：Vivienne Westwood

Object: Vivienne Westwood





建筑：Make Up For Ever 全国店 Object: Make Up For Ever National store



建筑：阿迪达斯专卖店 Object: Adidas Store



建筑：Donna Karen New York专卖店 Object: Donna Karen New York

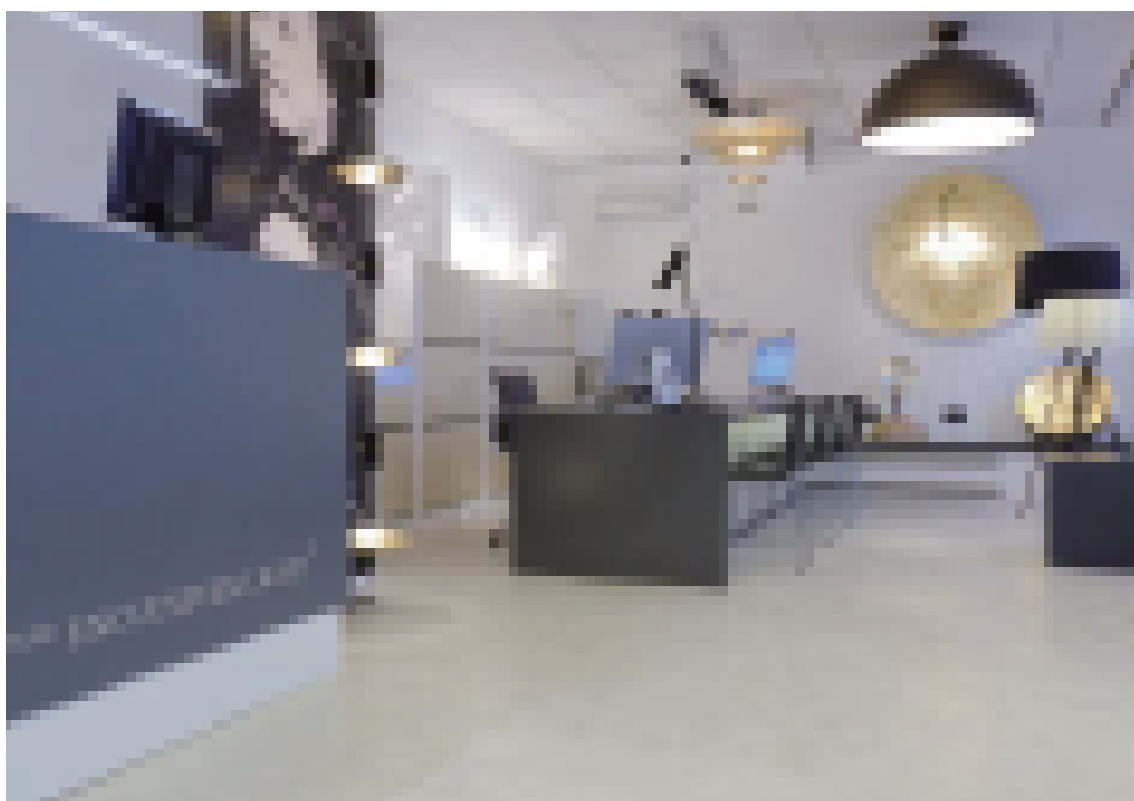


建筑：COS专卖店 Object: COS Store



建筑: Grimm Bitterfeld展厅

Object: Grimm Bitterfeld



建筑: Multiline展厅

Object: Multiline



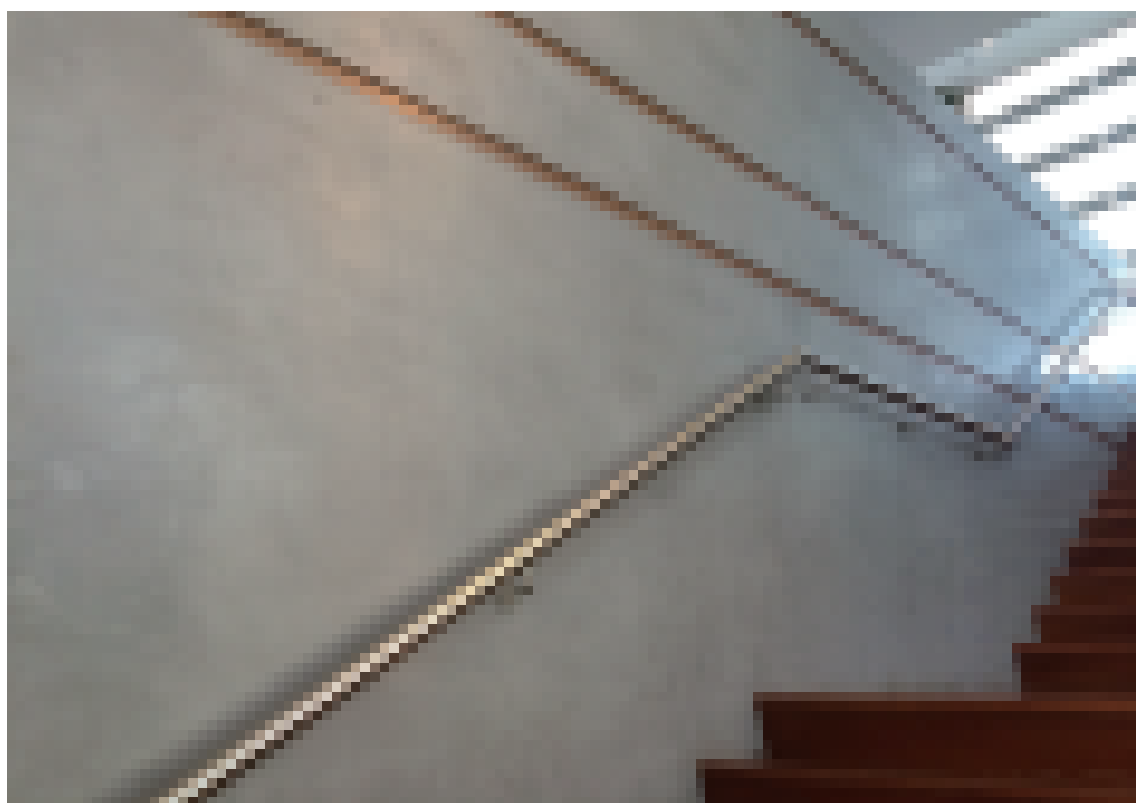
建筑：展厅 Object: Showroom



建筑：panDOMO展厅 Object: panDOMO Showroom



建筑：西安设计师办公室 Object: Xi'an Designer Office



建筑：微软亚太区技术中心 Object: Microsoft APAC Technical Center



建筑：台湾学学文创

Object: Taiwan Xue Xue Institute

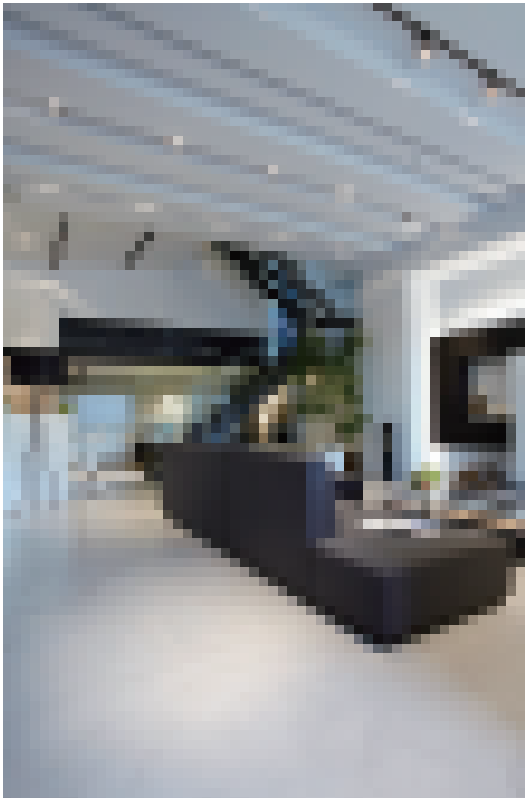
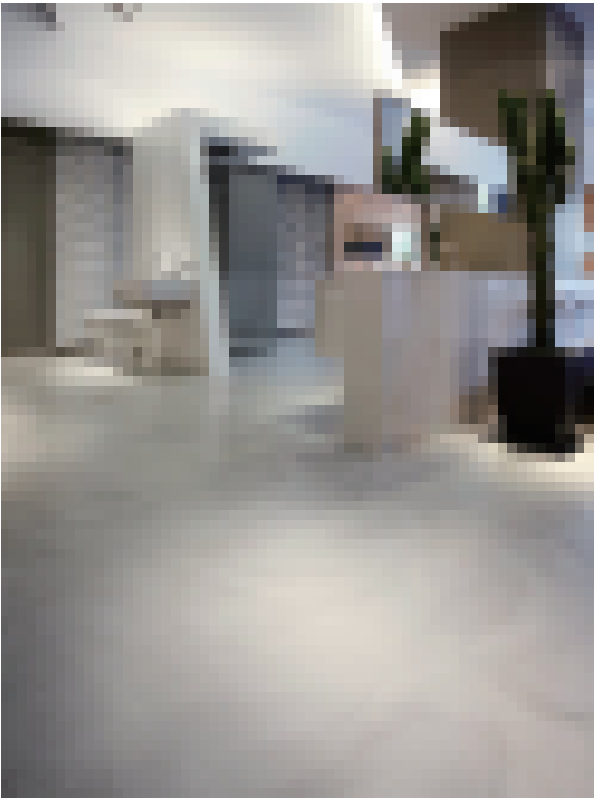


建筑：台湾学学文创

Object: Taiwan Xue Xue Institute



建筑：上海虹桥时一区 Object: Shanghai Hongqiao CBD



建筑：Pandomo K2卫浴展厅 Object:Pandomo K2-Sanitary Ware showroom



建筑：上海美国学校

Object: American School, Shanghai



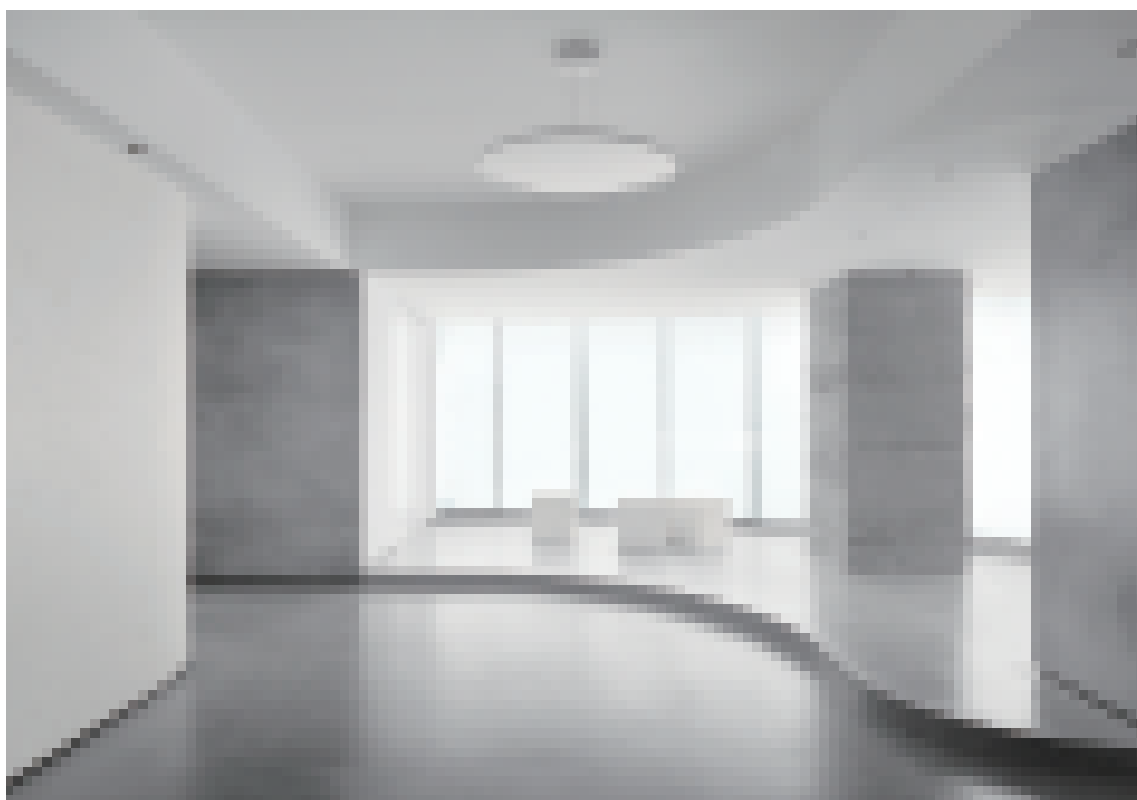
建筑：西安德国品牌水循环系统展厅

Object: Xi 'an German Brand Water Circulation System Showroom



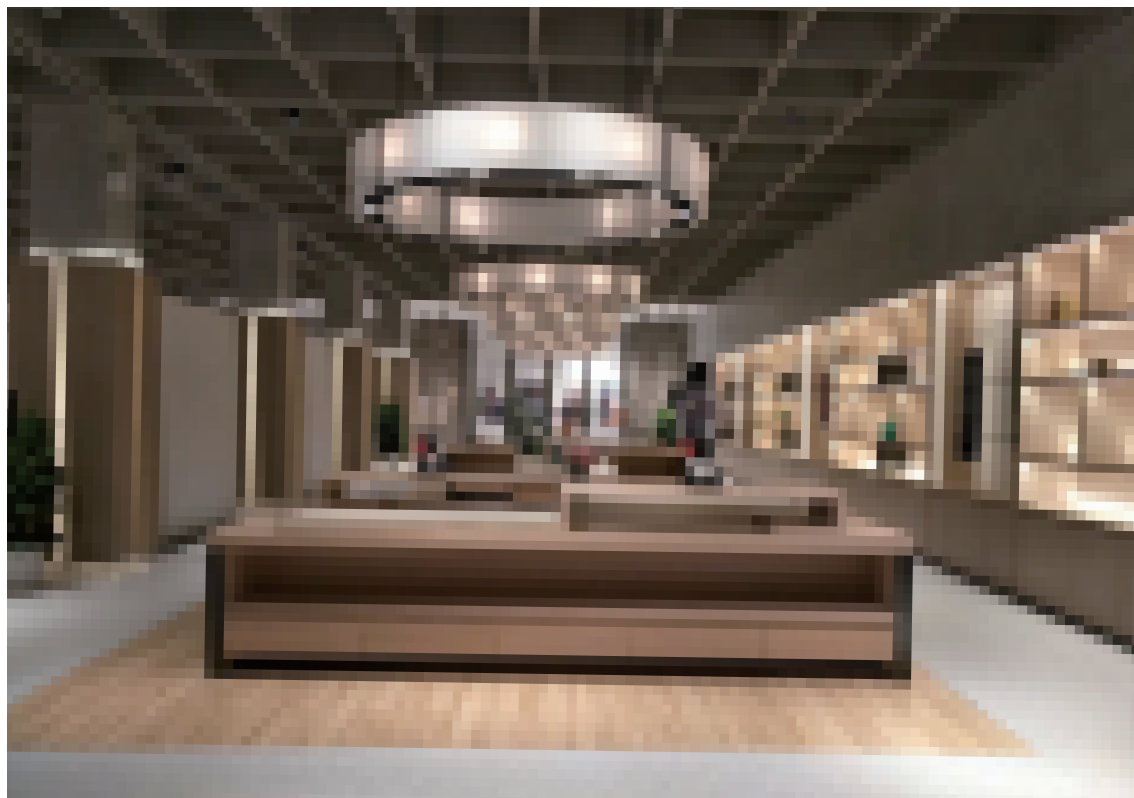
建筑：TSJ办公室

Object: TSJ Office



建筑：三千办公室

Object: Sanqian Office



建筑：南京云锦博物馆

Object: Nanjing Yunjin Museum



建筑：汕头泰盛科创园

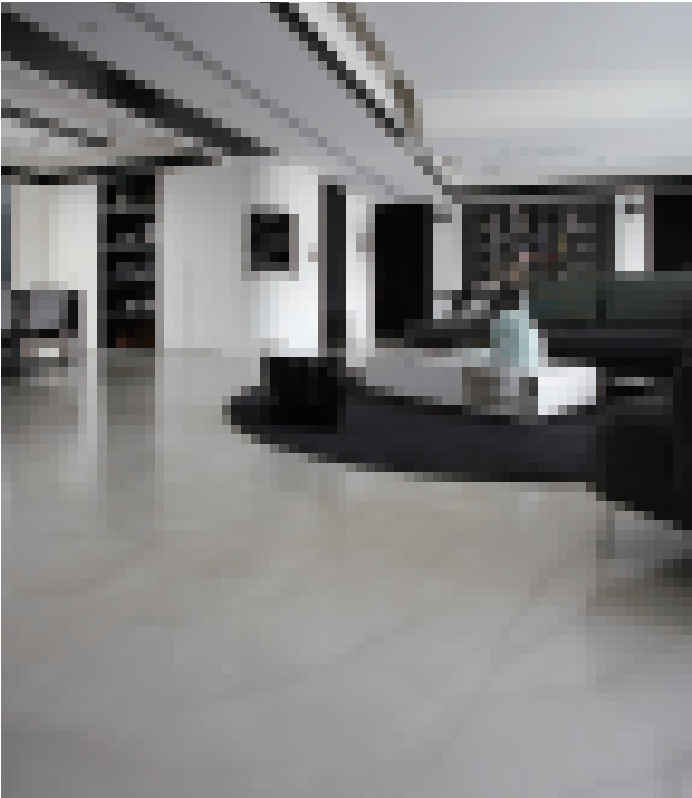
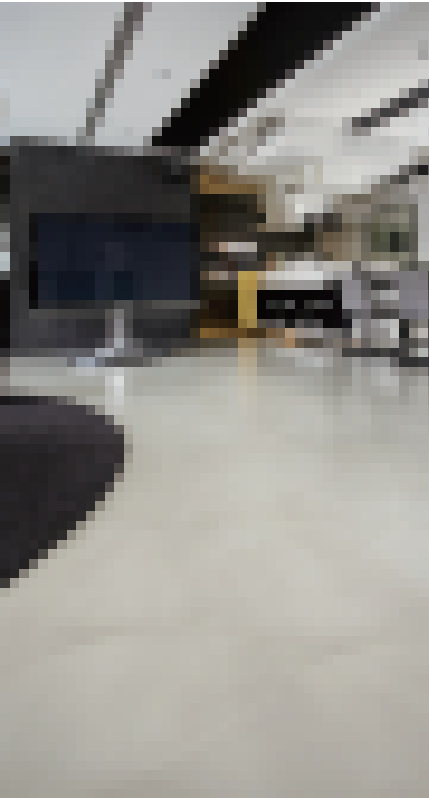
Object: Shantou Taisheng Kechuang Garden



建筑：私人别墅 Object: Private Villa



建筑：私人别墅 Object: Private Villa

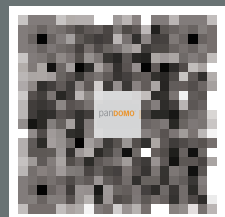


建筑：台湾私人别墅 Object: Taiwan Private Villa



建筑：私人别墅 Object: Private Villa

亚地斯建材（上海）有限公司
ARDEX (SHANGHAI) CO., LTD.
上海市徐汇区桂平路481号桂中园2号楼4楼
4F, Bld 2, Guizhong Park, No. 481, Guiping
Rd, Xuhui, Shanghai, PRC
400-658-7022 / 800-820-7022
www.ardex-pandomo.com
www.ardexchina.com



Printed in SH-1221